



MECHANICAL BELT FASTENING

SOLID PLATE FASTENER SYSTEMS

DESIGN, FABRICATION AND SUPPLY OF CONVEYOR BELTS

WWW.LUFH-CBS.COM



SOLID PLATE FASTENER Systems



Conveyor belt mechanical splicing is the joining of the ends of the belt using specially designed metal elements that provide the strength needed to hold the ends together. LUFH offers its range of solid plate fastener systems for joining fabric conveyor belts. We provide different sizes from 1" to 3", to meet different the demands of the toughest material handling applications.

LUFH **Solid Plate Fastener systems** are generally used in heavy-duty applications for conveying bulk material with different abrasive characteristics, such as bauxite, iron ore, ferronickel, sand, gravel and coal.

SOLID PLATE FASTENER SYSTEMS

CHARACTERISTICS

LUFH solid plate fastener systems feature high tensile strength and are quick and easy to install, which reduces maintenance time on the conveyor belts. The fasteners extend over the butt-jointed belt ends, being held in place by heavy-duty bolts and specially designed top and bottom plates, with teeth that ensure the clamped ends are held in place.

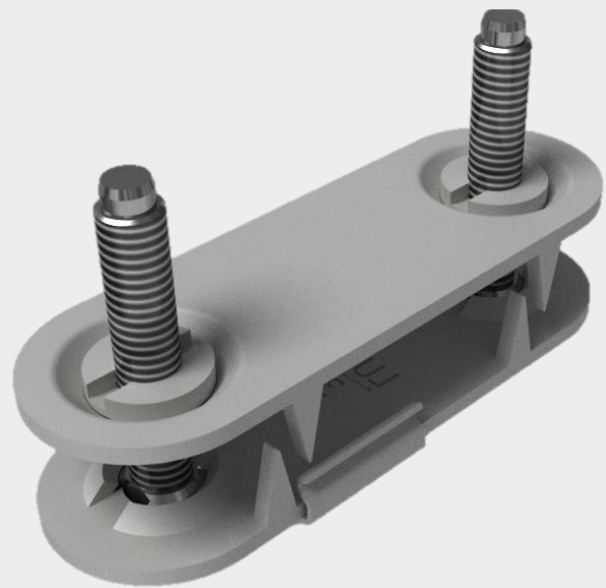
LUFH Plate Fastener Systems Specifications

FASTENER SIZES	LUFH Code	Length		Width		Hole Centre-to-Centre Spacing		Bolt Sizes	
		inch	mm	inch	mm	inch	mm	inch	mm
1"	BPF100S	1.57/64	48	7/8	22	1	25	1/4x1.1/4	6 x 32
1-1/2"	BPF112S	2.17/32	64	1.1/32	26	1.1/2	38	5/16x2	8x50
2"	BPF200S	3.9/64	80	1.9/64	29	2	50	5/16x2	8x50
2-1/2"	BPF212S	4	102	1.1/2	38	2.1/2	64	3/8 x 2.5/32	10x55
3"	BPF300S	4.1/2	114	1.1/2	38	3	76	3/8 x 2.5/32	10x55

Steps for the correct selection of LUFH plate fastener systems

1. Measure the thickness of the conveyor belt (inches or mm).
2. Check the belt tension (PIW or KN/m).
3. Measure the diameter of the pulley with a wrap angle greater than 90° (inches or mm).
4. Choose the appropriate plate size according to the Selection Guide (see below).
5. Check the belt width and determine the number of fasteners required for a 90° joint.
6. Verify the quantity per box according to the fastener size and determine the total quantity to be ordered.

LUFH solid plate fastener systems are manufactured to high quality standards to meet customer requirements.



SOLID PLATE FASTENER SYSTEMS SELECTION GUIDE

FASTENER SIZE	LUFH Code	Working Tensile Stress Range		Belt Thickness		Minimum Pulley Diameter	
		PIW	Kn/m	inch	mm	inch	mm
1"	BPF100S	228	40	1/5 - 5/16	5 - 8	10	250
1-1/2"	BPF112S	430	75	5/16 - 15/32	8 - 12	18	450
2"	BPF200S	430	75	5/16 - 15/32	8 - 15	30	750
2-1/2"	BPF212S	570	100	15/32 - 25/32	12 - 20	40	1050
3"	BPF300S	570	100	19/32 - 1 3/16	15 - 30	>47	>1200

Number of sets required depending on belt width

Belt Width		FASTENER SIZE				
inch	mm	1"	1-1/2"	2"	2-1/2"	3"
12	300	10	8
16	400	13	10	9
18	450	15	12	10	9	...
20	500	16	13	11	10	10
24	600	20	16	14	13	13
26	650	22	17	15	14	14
28	700	23	18	16	15	15
30	750	25	20	17	16	16
36	900	30	24	21	19	19
42	1050	35	28	24	22	21
48	1200	40	32	28	26	24
60	1500	50	40	35	32	30
72	1800	60	48	42	39	36

FASTENER SIZE	LUFH Code	Number of Sets per Box
1"	BPF100S	25
1-1/2"	BPF112S	25
2"	BPF200S	25
2-1/2"	BPF212S	10
3"	BPF300S	10

For more information, please contact our Sales Department.

PRESENTATION

LUFH solid plate fastener systems consist of sets of one (1) top plate; one (1) bottom plate; two (2) bolts; two (2) nuts; and one (1) retaining plate or washer. The quantity of sets packaged in each box depends on the size of the fastener.

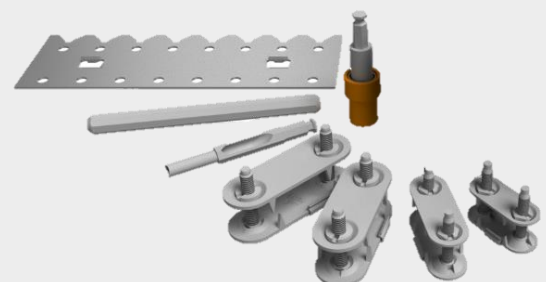
APPLICATIONS

The solid plate fastener are used in heavy-duty applications for conveying bulk material with different abrasive characteristics such as :

- Bauxite
- Iron ore
- Ferronickel
- Sand
- Gravel
- Coal.

INSTALLATION

The solid plate Fastener are easy to install, they are installed with portable electric or manual tools.



COMMERCIAL OFFICES

UNITED STATES OF AMERICA

Email: sales@lufh-cbs.com

Address: 3508 NW 114 Ave, Doral, FL 33178, USA.

UNITED ARAB EMIRATES

Email: lparedes@lufh-cbs.com

Address: Po box 16686, RasAl Khaimah, UAE.

VENEZUELA

Email: sales@lufh-cbs.com

Address: Zona industrial los pinos, UD-301, Manzana Nro 28, Parcela Nro 9, Calle Nro 6, Galpón Nro 3, Puerto Ordaz, Estado Bolivar, Venezuela.

COLOMBIA

Email: sales@lufh-cbs.com

Address: Calle 77, N° 59 - 35, Oficina 11-08, Edificio Las Américas 3, Barranquilla, Atlántico, Colombia.



WWW.LUFH-CBS.COM